

# GET INVOLVED

As Minneapolis celebrates being one of the top cycling cities in the United States, Twin Cities community members can use our passion for bikes to give back to our community through Full Cycle. Be part of Full Cycle's vision: to be one of the nation's most successful social enterprises impacting homeless youth. Learn more about the following engagement opportunities on our website: [www.fullcyclebikeshop.org](http://www.fullcyclebikeshop.org).



Donate a bike, purchase a bike and accessories, or bring a bike in for maintenance. Encourage others to do the same.



Contribute a tax-deductible donation. Donate in person at the bike shop, by mail, or through our website.



Volunteer to assist with existing fundraising or supporting events. Help create or host your own fundraising event (bike drives, fundraising parties, or bike rides).



Invest in our social enterprise through your business, corporation, or foundation.



Refer youth to our programs.



# 2020 ANNUAL REPORT

AN ENTERPRISE OF  
**PILLSBURY  
UNITED COMMUNITIES**



3515 Chicago Avenue South • Minneapolis, Minnesota 55407  
(612) 824-7581 • [www.fullcyclebikeshop.org](http://www.fullcyclebikeshop.org)

OUR MISSION  
To connect with and support homeless youth, our community, and our Earth through bikes, business, and relationships.

Full Cycle, a South Minneapolis non-profit bicycle shop, incorporates four integrated strategies, with some additional projects, to meet the needs of young adults experiencing homelessness on a spectrum ranging from survival to independence. These strategies include our paid internship program, free bike appointments, street outreach, and food access programming. These combined strategies result in over 1,500 interactions annually with young people experiencing homelessness and facing barriers to independence. We sell high-quality used bicycles, new parts and accessories to the general public. With this earned income strategy we help fund our programming while exemplifying self-sufficiency.

WHO WE ARE



## **PARTNERSHIPS BUILDING CAPACITY**

Thrivent Financial  
Matter

UMN Reuse Center  
FB4K  
Sisters Camelot  
Turtle Bread  
Archdale

Blockhead Printing  
Erik's Bike Ranch  
Hope Street  
Jakeeno's  
MIA

Nicollet Square  
Open Streets MPLS  
Surly Bikes  
Tiny Diner  
Brian Coyle Center

Waite House  
Oak Park  
Quality Bicycle Products  
Minneapolis Public Schools  
Equal Exchange Coffee

Groveland Emergency Food Shelf  
Street Works Collaborative  
Division of Indian Works  
Seward Community Coop

## **A NOTE FROM THE DIRECTOR**

This past year has impacted all of us in so many ways. For Full Cycle we were forced to adapt and re-strategize every aspect of what we do to support young people experiencing homelessness as well as our bike shop customers. We did this in a way that felt safe and responsible from the onset of a pandemic that didn't come with rules guidelines or expectations. As we learned more about COVID and how to live and work with it in our lives we were able to establish a new normal and keep moving forward.

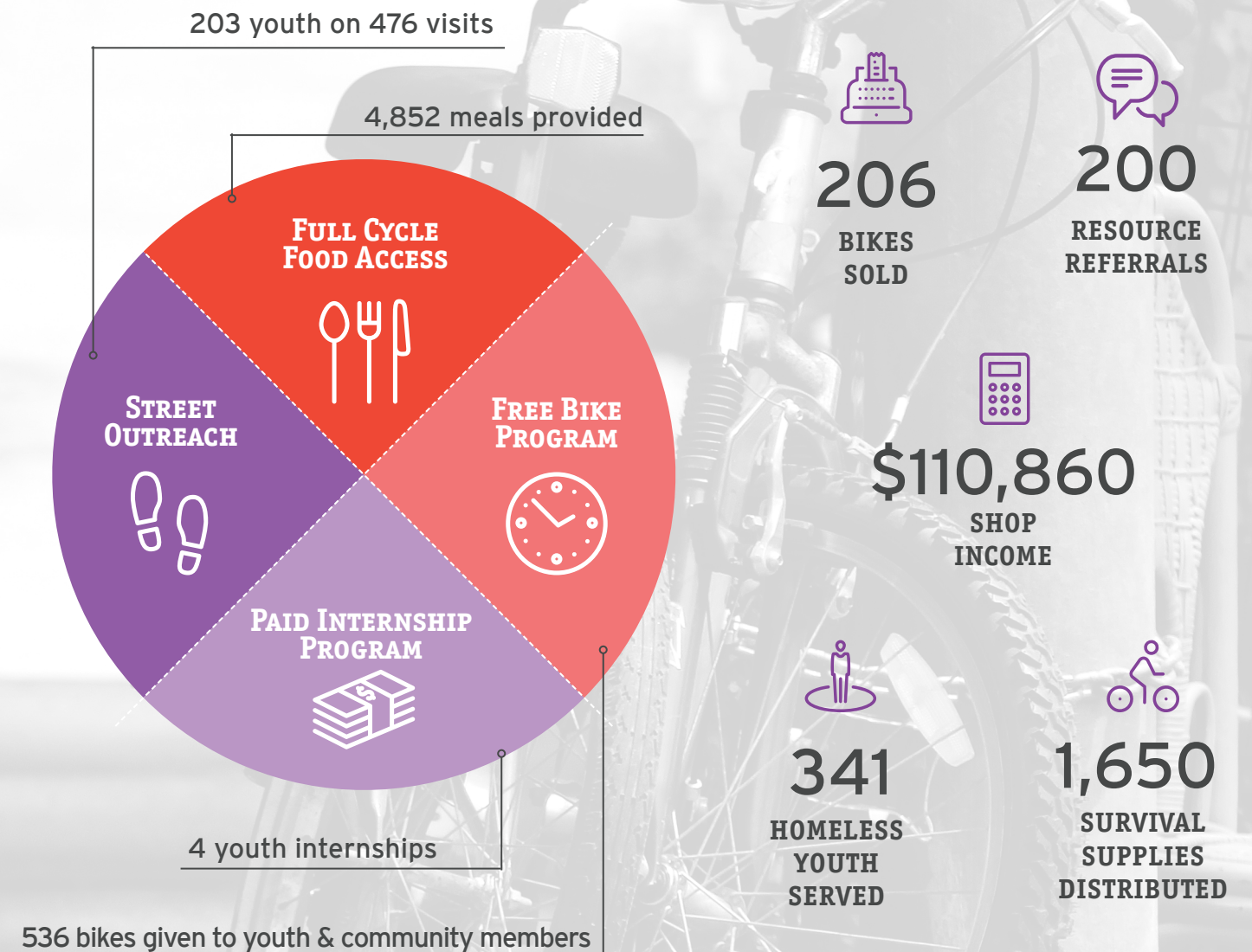
However, before we even had the chance to adjust to this new normal, George Floyd was murdered by police officers just blocks down the street. Throughout my entire 22 years living and working in this neighborhood I have never witnessed such sadness, anger and destruction in our community. Full Cycle bike shop was no exception. Throughout the summer we found ourselves coping with our own grief and anger over the inequities in our society so clearly on display. We did it while cleaning up the smashed windows and defaced walls of our shop that we understood were an expression of an unjust system. So many individuals and families were forced to create outdoor encampments in surrounding parks in an attempt to create community and survive. We did what we could to support one of the biggest encampments in Powderhorn Park, just blocks away. We were all challenged to function every day in a community raw with injustice and unpredictable with desperation.

Needless to say it's been hard year for people worldwide and a painfully unforgettable summer for those living and working in South Minneapolis. As we think creatively and work hard to fight for justice and rebuild peace in our community, we are also exploring ways to increase efficiency and build sustainability into our youth programming and business model. Full Cycle staff have always recognized the necessity for creativity, flexibility and focus to achieve our mission of connecting with and supporting youth experiencing homeless, and our community through bikes, business and relationships. 2020 demanded exponentially more of these traits in addition to incredible amounts of compassion, communication and commitment. I feel so incredibly proud of the Full Cycle team that came together this year and went above and beyond in there service to provide hope and opportunity to our neighborhood and the young people we work with.

Sincerely,

Matt Tennant  
Full Cycle Founder & Director

## **2020 IN NUMBERS**



**Thank you to all of our customers, donors, and supporters that have believed in our mission and supported our work over the years!**

## **FUNDERS**

Ameriprise Financial  
Donaldson Foundation

Matter  
Fiddle Head Fund  
Hunger Solutions  
New Belgium Brewing

Seward Co-op  
Wells Foundation  
StreetWorks Collaborative  
Hennepin County Career Services

MN Office of Economic Opportunity  
American Family Insurance Dreams Foundation

